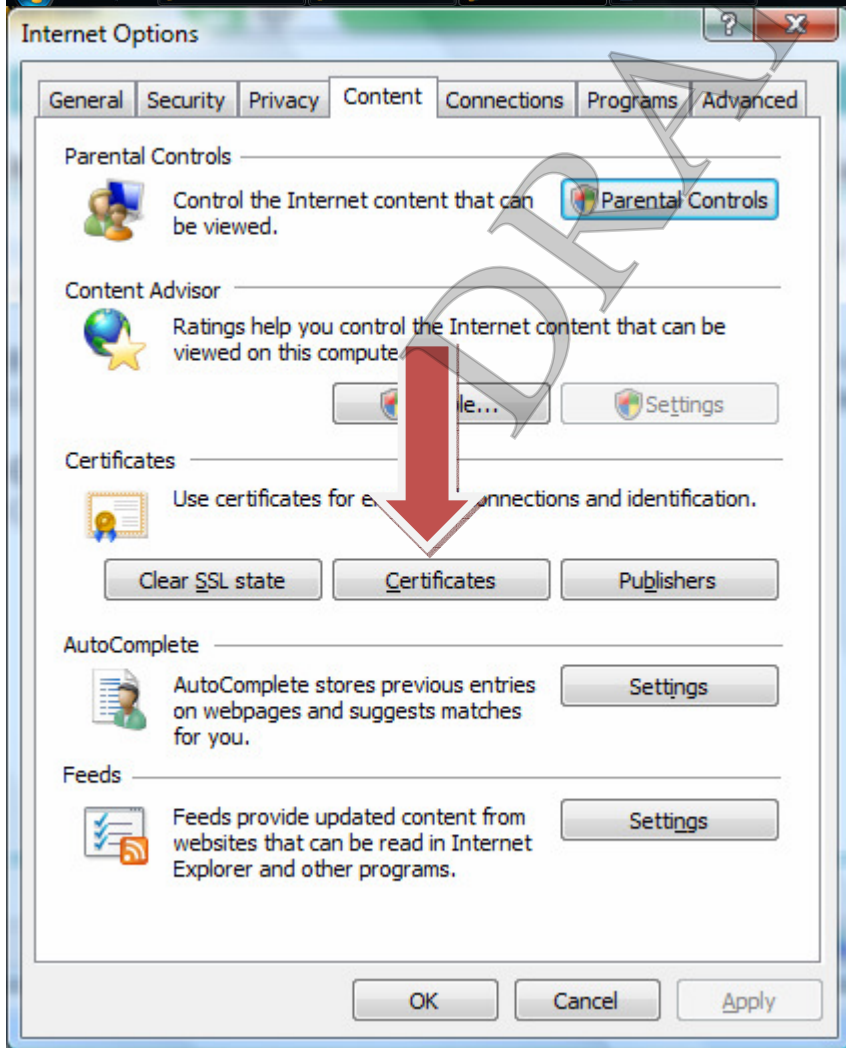
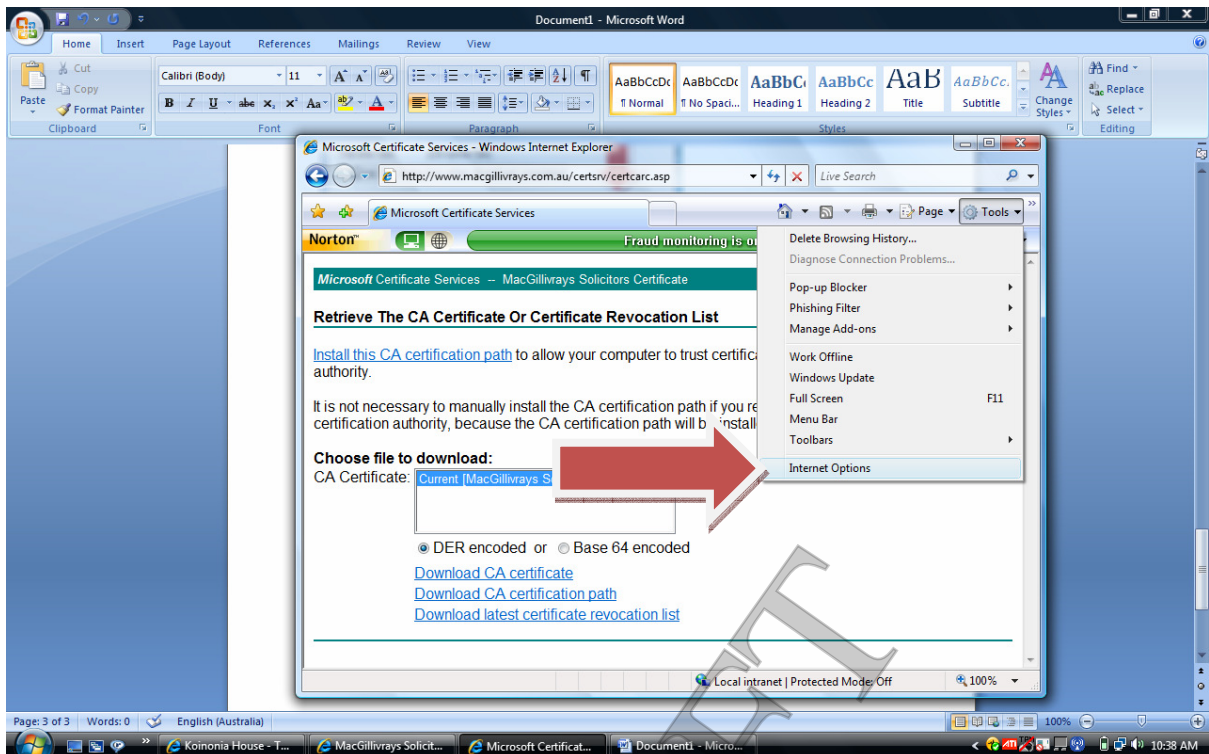
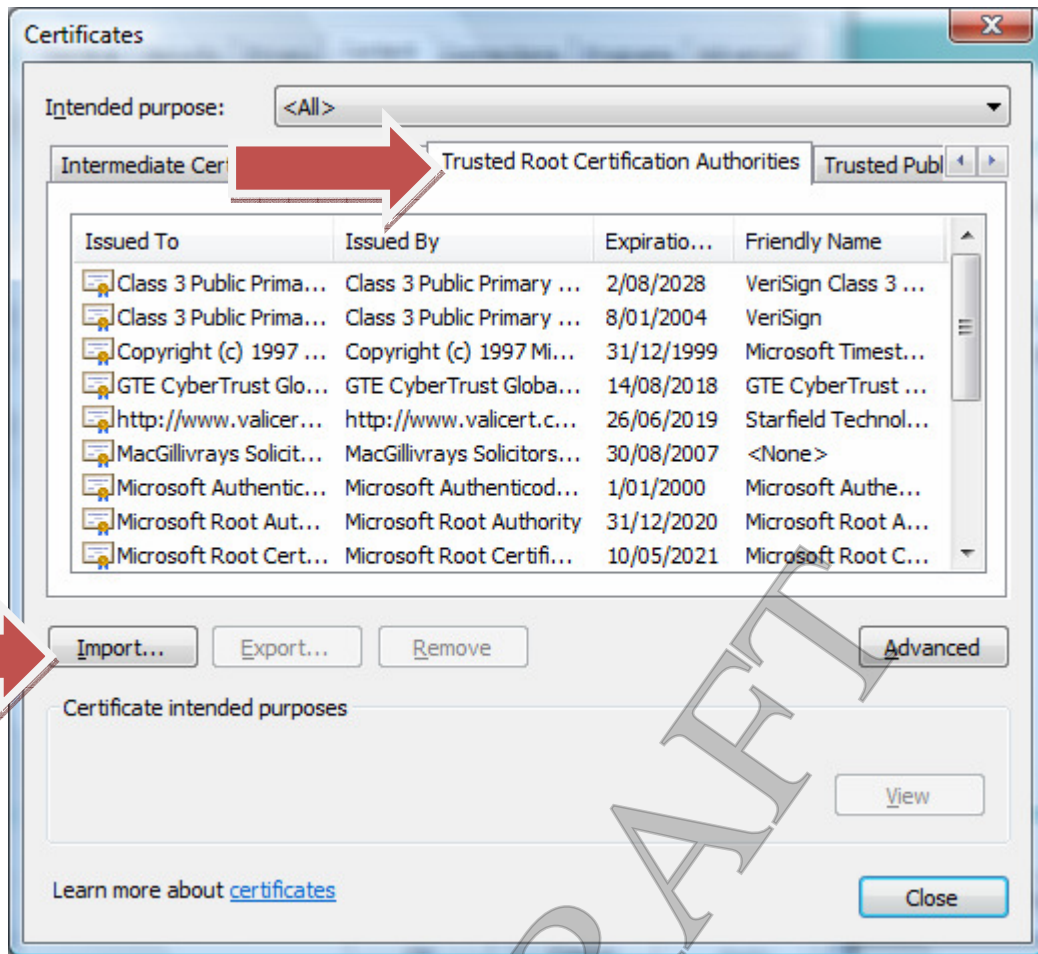



DRAFT





Certificate Import Wizard



### Welcome to the Certificate Import Wizard

This wizard helps you copy certificates, certificate trust lists, and certificate revocation lists from your disk to a certificate store.

A certificate, which is issued by a certification authority, is a confirmation of your identity and contains information used to protect data or to establish secure network connections. A certificate store is the system area where certificates are kept.

To continue, click Next.

**Next >** **Cancel**

Certificate Import Wizard

#### File to Import

Specify the file you want to import.

File name:

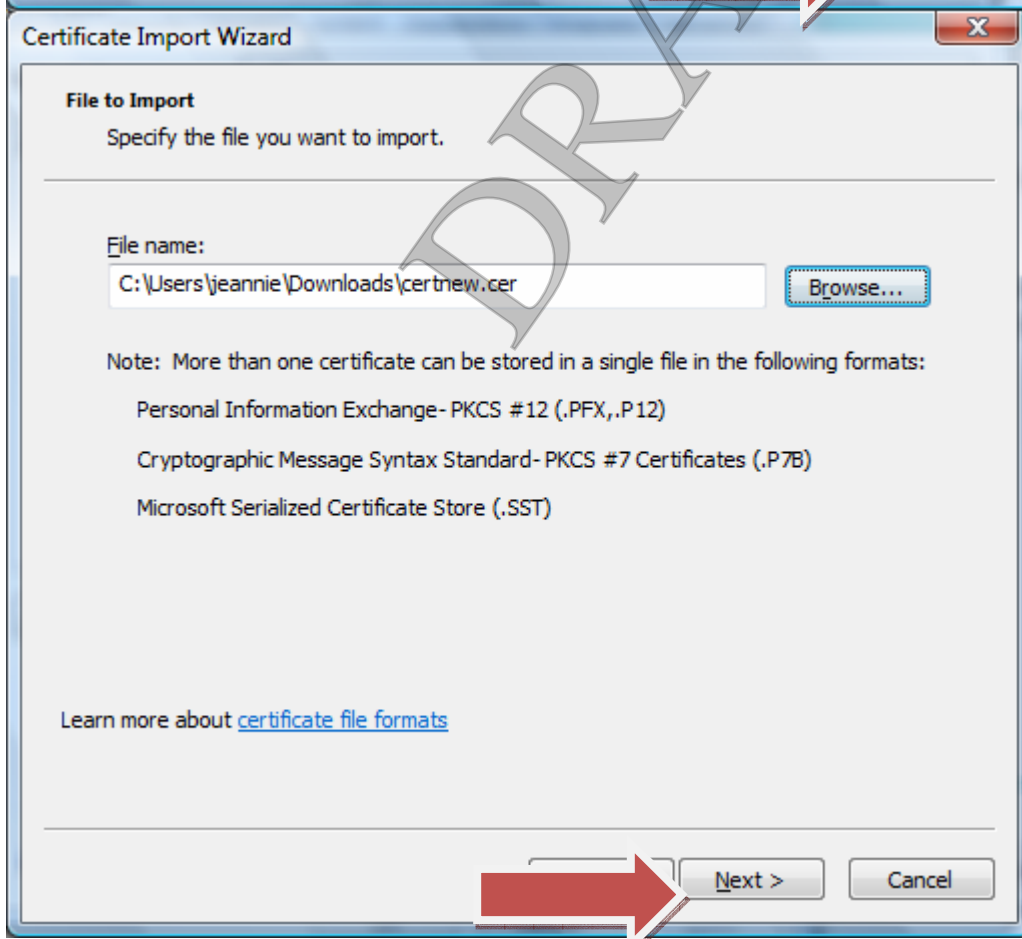
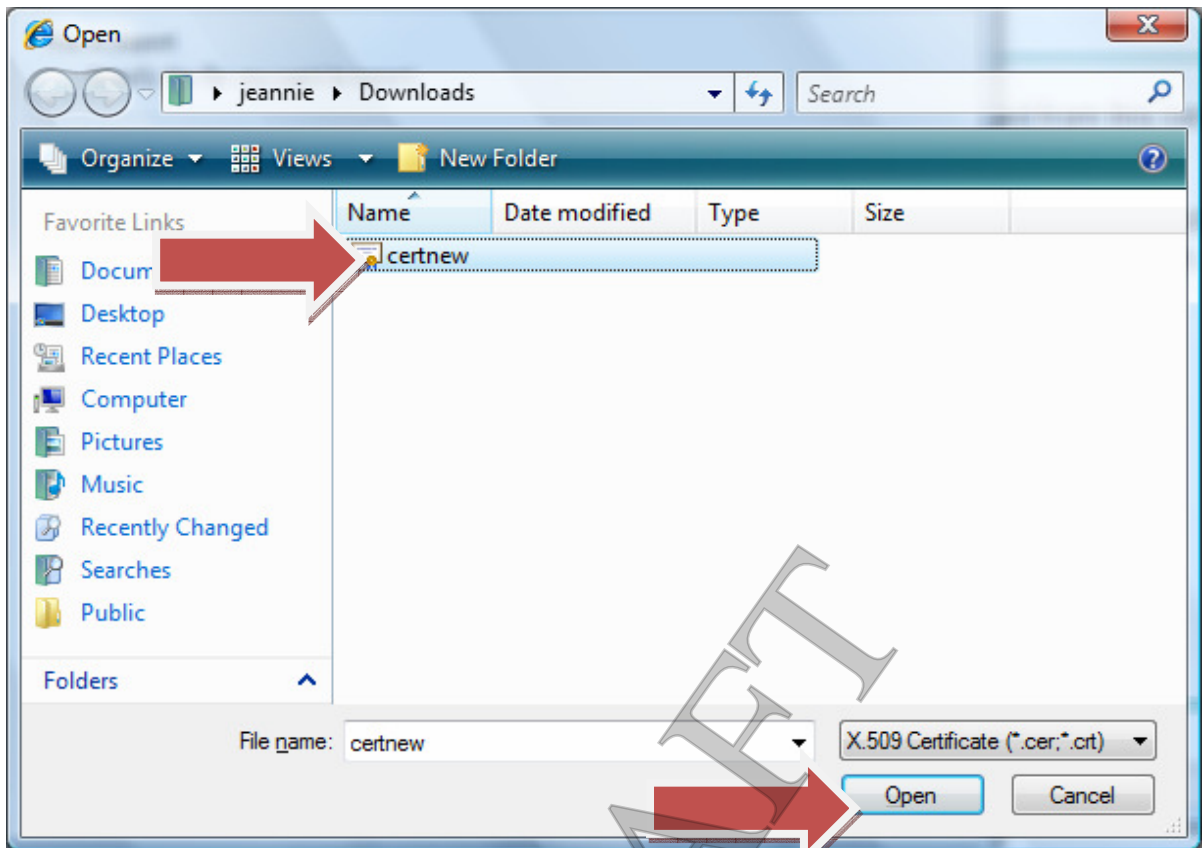
**Browse...**

Note: More than one certificate can be stored in a single file in the following formats:

- Personal Information Exchange- PKCS #12 (.PFX, .P12)
- Cryptographic Message Syntax Standard- PKCS #7 Certificates (.P7B)
- Microsoft Serialized Certificate Store (.SST)

Learn more about [certificate file formats](#)

**< Back** **Next >** **Cancel**



**Certificate Import Wizard**

**Certificate Store**  
Certificate stores are system areas where certificates are kept.

Windows can automatically select a certificate store, or you can specify a location for the certificate.

Automatically select the certificate store based on the type of certificate

Place all certificates in the following store:

Certificate store:  
Trusted Root Certification Authorities Browse...

Learn more about [certificate stores](#)

Next > Cancel

**Certificate Import Wizard**

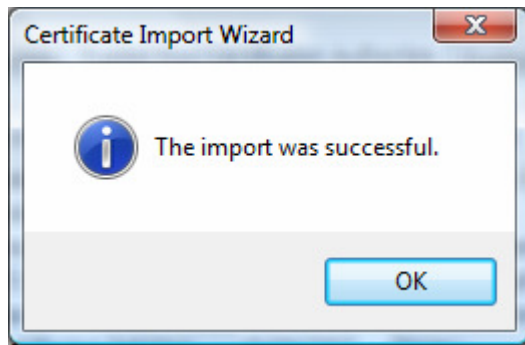
**Completing the Certificate Import Wizard**

The certificate will be imported after you click Finish.

You have specified the following settings:

Certificate Store Selected by User	Trusted Root Certificate
Content	Certificate
File Name	C:\Users\jeannie\Downloa

Finish Cancel



Close all Windows of Internet explorer and then attempt to login.

DRAFT